



RuleDesigner PLM & Configurator

Management of product data and collaborative processes in the vehicle assistance equipment sector.

<http://pdm.rulesdesigner.com>

IMPLEMENTATION PROJECT



The Context.

In an environment of continuous operational improvement in the management of technical information workflows, last year, Corghi spa started evaluating different PDM systems in order to improve the efficiency and effectiveness of innovation activities distributed along its product lifecycle.

Thus, the company opened a software selection aimed at figuring out the right solution.

The Challenge.

- Bring quickly into effect the new PDM solution integrated with the 3D CAD software (Nx e Solid Edge) in use by the Group, fostering a “cross-functional collaboration among the different corporate actors” along the product development and definition processes.
- Extend the usability of PDM data to other corporate functions, regardless of their geographical location.
- Map an integrated and coherent data flow in order to provide customized information embracing the “point of view” that each user has on the product.
- Meet the needs of efficiency benefiting from automation processes set along the technical data approval workflows.

CAD software in use

- Siemens NX

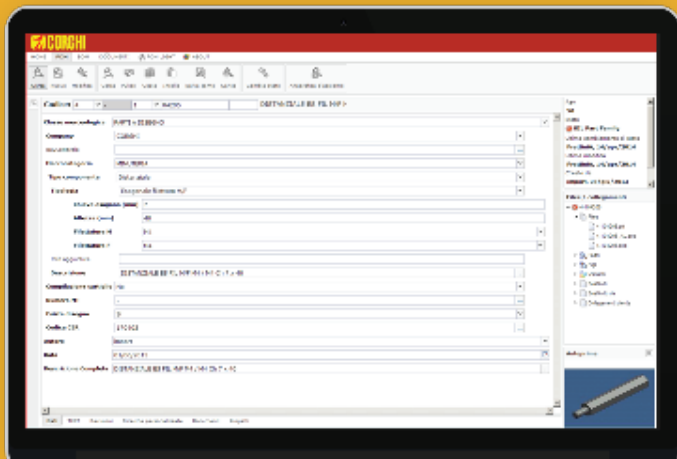
ERP system in use

- Microsoft Dynamics AX with Engineering Change Management

Users

- 35 units





The Solution.

At the end of the evaluation process that involved different PLM solutions, Corghi SpA choose **RuleDesigner®** as a solution aimed at corporate and collaboration management at an enterprise-level through a web-based platform for the integrated management and automation of corporate processes

Many reasons lead Corghi to this choice:

- The system's hyper-parametric structure which enable the company to autonomously configure corporate workflows, with no need to develop product customizations.
- The possibility of **RuleDesigner®** to model data and document generation processes even in complex formats such as those of the NX CAD systems.
- The possibility to manage document workflows within the domain of PLM processes to produce documents in co-working to replace the former in-house developed solution.
- A positive win-to-win relationship with the vendor to ensure the product continuous improvement .

Implementation.

PDM workflows and interaction with the CAD software NX and Solid Edge

RuleDesigner® PDM Fusion allows the company to organize and share models, assemblies and technical drawings in both NX and Solid-Edge format thorough:

- homogeneous codification and part-numbering plans
- approval workflows configured to meet the customer request
- tools for file storage and intelligent search
- functions for properties automatic filling into file and title-blocks
- management of both assembly relationships and wave-link connections.

Configuration of automation processes

Thanks to **RuleDesigner®** it is possible to model automation processes along the part-numbers approval workflows. Also, several procedures are configured to automatically create and store documents destined to be consulted out of the technical office: pdf, dxf, jt and step file with different watermarks and, of course, typical Microsoft Office documents.

Sharing PLM data across the extended enterprise

RuleDesigner tool for automatically publish data enables any user pertaining to the Nexion Group (to which Corghi belongs to) to access PDM data and attached file for consultation. Thanks to visibility rules set on the part-numbers status or file extension, users are allowed to see only what has been targeted towards them based on their role or the group they are member of.

At present, **RuleDesigner®** permits that technical data are automatically entered into the correct business flows with no interruption and forwarded to ERP system, Microsoft Dynamics AX, on the basis of rule-based workflows.

Collaborative Document Management

Thanks to **RuleDesigner®** it is even possible to manage several document types, creating them using templates.

Specifically, each document type configured has been associated to a template created with Microsoft Word using layouts containing references to the file attributes that will customize the documents while filling it.

The creation, storage and distribution of such documents is performed automatically, filling in those properties required on the basis of the document type.

Furthermore, for each type was configured the co-working flow aimed at finalizing the document until its approval and storage.



Peculiarities of the project

- Product structure conceived for management by the user, in total autonomy
- Complete pliability in the structuring of data classification, extensible at any time
- Configuration of a “self-explanatory” part-numbering, driven by rules
- Solid and comprehensive integration with the CAD design software NX and Solid Edge
- Automation processes that can be driven using the configurator
- Inter-departmental and Inter-organizational collaboration facilitated by the PLM platform
- Integration of data into Microsoft Dynamics AX
- Management of document workflows based on templates and integrated into PLM processes



Nexion Group

Nexion Spa Industrial Group embraces different companies and brands for the supply of vehicle assistance equipments, such as tyre changers, wheel balancers, wheel aligners for controlling the geometry, lifting equipment and test tools.

Companies of the Group

- Corghi
- Mondolfo Ferro
- Simpesfaip
- Sice

Corghi spa

Product Categories

- Light tyre changers
- Heavy tyre changers
- Wheel balancers
- Wheel aligners
- Lifting equipment
- Test equipment

Website

<http://www.corghi.com>

Business sector

Settore automobilistico

Company dimension

800 employees



Corghi maintains its leadership in the Italian market with 20% of its turnover.

Corghi is also a leader in the international market. 50% of the turnover is generated in Europe, which Corghi defines as the "home market".

The Far East, Japan and the United States are the main overseas markets for Corghi and represent 40% of its turnover. The quality of the products and services remains constant over time and in different markets.

Corghi partners know they can rely on the company since for many of them collaboration has continued for decades.

The company is fully aware that its competitiveness is related to an authoritative and wide ranging presence in world markets and, in particular, to its ability to offer excellent products, a wide and diversified range and a package of premium quality services wherever they are required.

CORGHI S.P.A.
A NEXION GROUP COMPANY
S.S. 468 N° 9 42015 CORREGGIO (RE)
ITALY
PH: ++39 0522 639111
FAX: ++39 0522 639150
VAT: 01700320359
E-MAIL: INFO@CORGHI.COM



The Company

ENGINEERING PLM Solutions was founded as a spin-off of the R&D division of the well-established ENGINEERING Spa, a system integrator in the CAD/PLM business since 1986..

ENGINEERING PLM Solutions, leading player in the PLM industry, developed RuleDesigner, the integrated suite of PLM applications.

RuleDesigner Fusion project started in 2004 in order to merge all the offering of the company in one single enterprise platform, innovative and focused on a rule-based methodological approach. Fusion was launched in 2010.

Today, RuleDesigner is an innovative collaborative platform and process automation solution for the extended enterprise.

ENGINEERING PLM SOLUTIONS SRL
Via Dismano 773
RAVENNA (RA) - Italy
Ph. +39 0544 554949
Email: marketing@ruledesigner.com
Web: www.ruledesigner.com

Solutions

Extended PLM for an enterprise-level management

RuleDesigner merges the PLM and CRM world in a modern web enterprise platform. It is able to support the development of daily activities, track and develop the network of relationships both inner and outer the company and manage the product lifecycle progress, since the concept phase. Also, RuleDesigner makes the relationship between business departments smooth and efficient in a collaborative perspective aimed at increasing efficiency and information sharing across business processes. Finally, it allows to track information, documents and communication exchanged with customers at all stages, till the service. It supports and strengthens the relationships between the company and its stakeholders such as customers, suppliers, co-designers, retailers and partners by providing them with web services.

Product configuration enabling automation across corporate processes

RuleDesigner Configurator allows to automate most of the activities involved in the process of product development, since the offer-stage. It is a technical and sales Configurator that, on a rule-driven base, permits to describe rules for product and document configuration and process automation. A flexible and transversal tool aimed at achieving the maximum efficiency all along the PLM processes: sales configuration supports the sales dept.; product technical configuration backs the design team and, finally, automatic generation of data or documentation and automation in workflows promote the progress of inter-departmental activities.